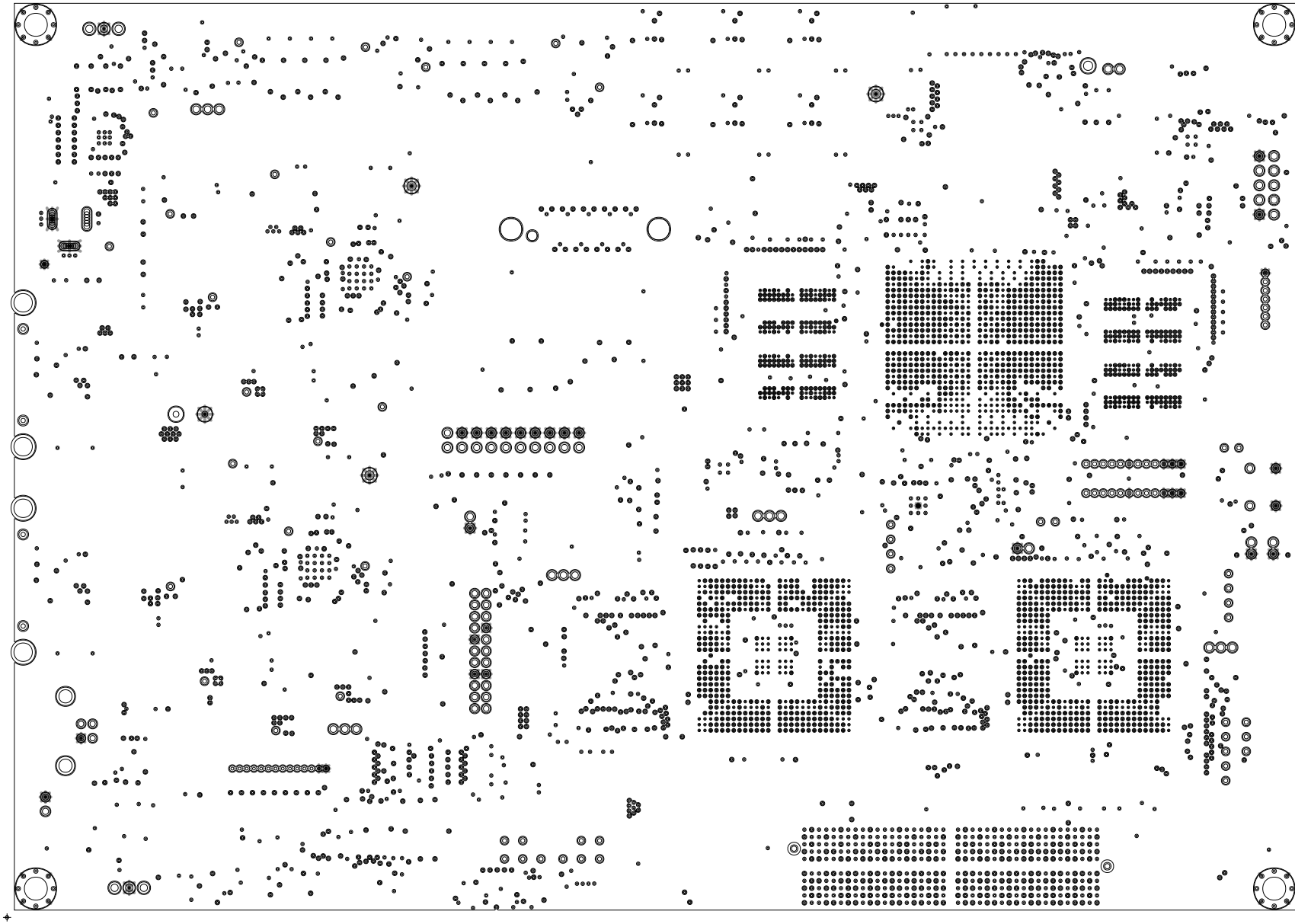


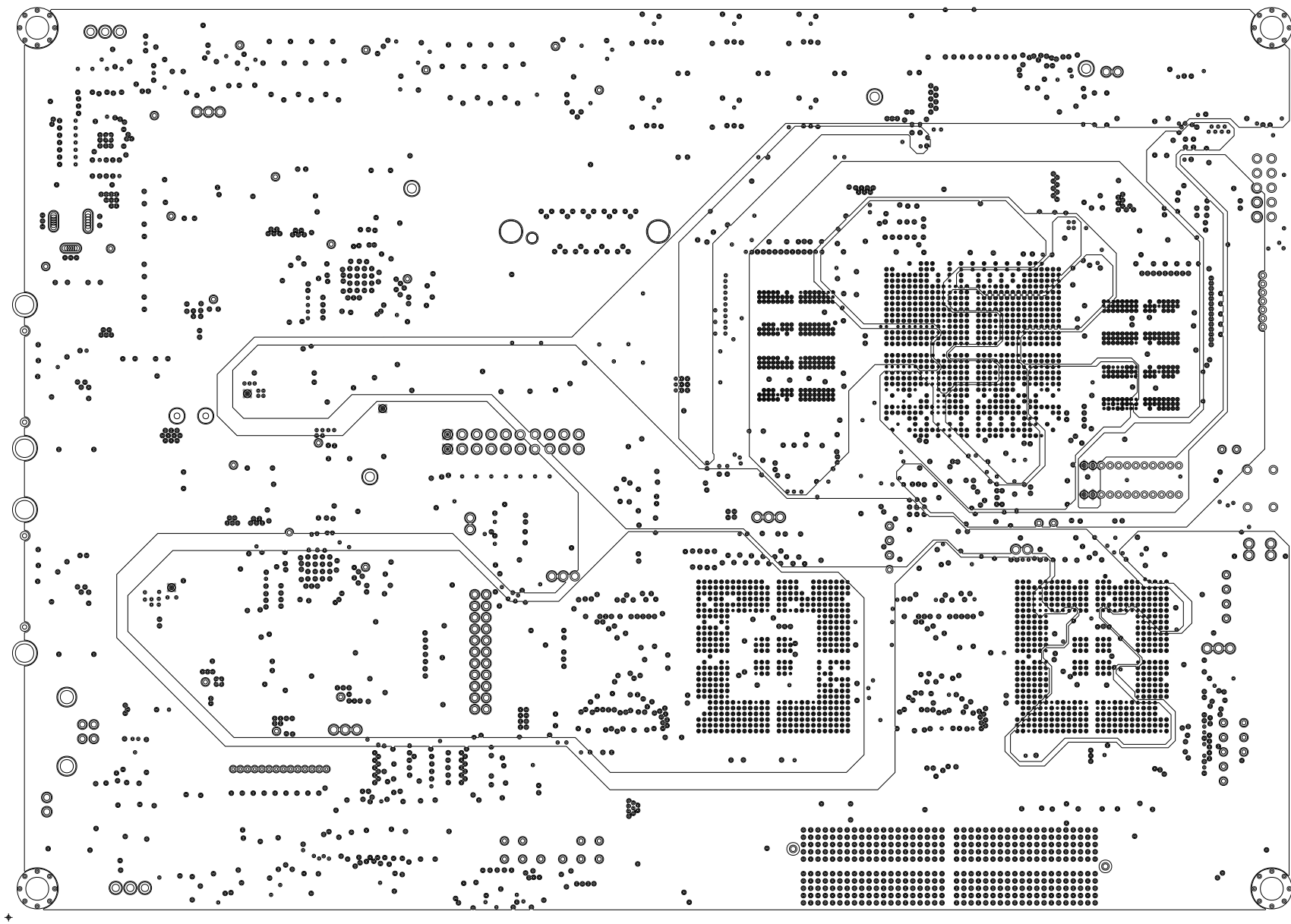
+



TEXAS INSTRUMENTS		
BOARD NAME:	DLP072-DLPC4420AEVMX	DESCRIPTION: SOLDERPASTE - PRIMARY SIDE
PROJECT #:	DLP-30341-04	DATE: 22 AUG 2023 REVISION:



TEXAS INSTRUMENTS		
BOARD NAME:	DLP072-DLPC4420AEVMX	DESCRIPTION: LAYER 11 - GND PLANE
PROJECT #:	DLP-30341-04	DATE: 22 AUG 2023
		REVISION:



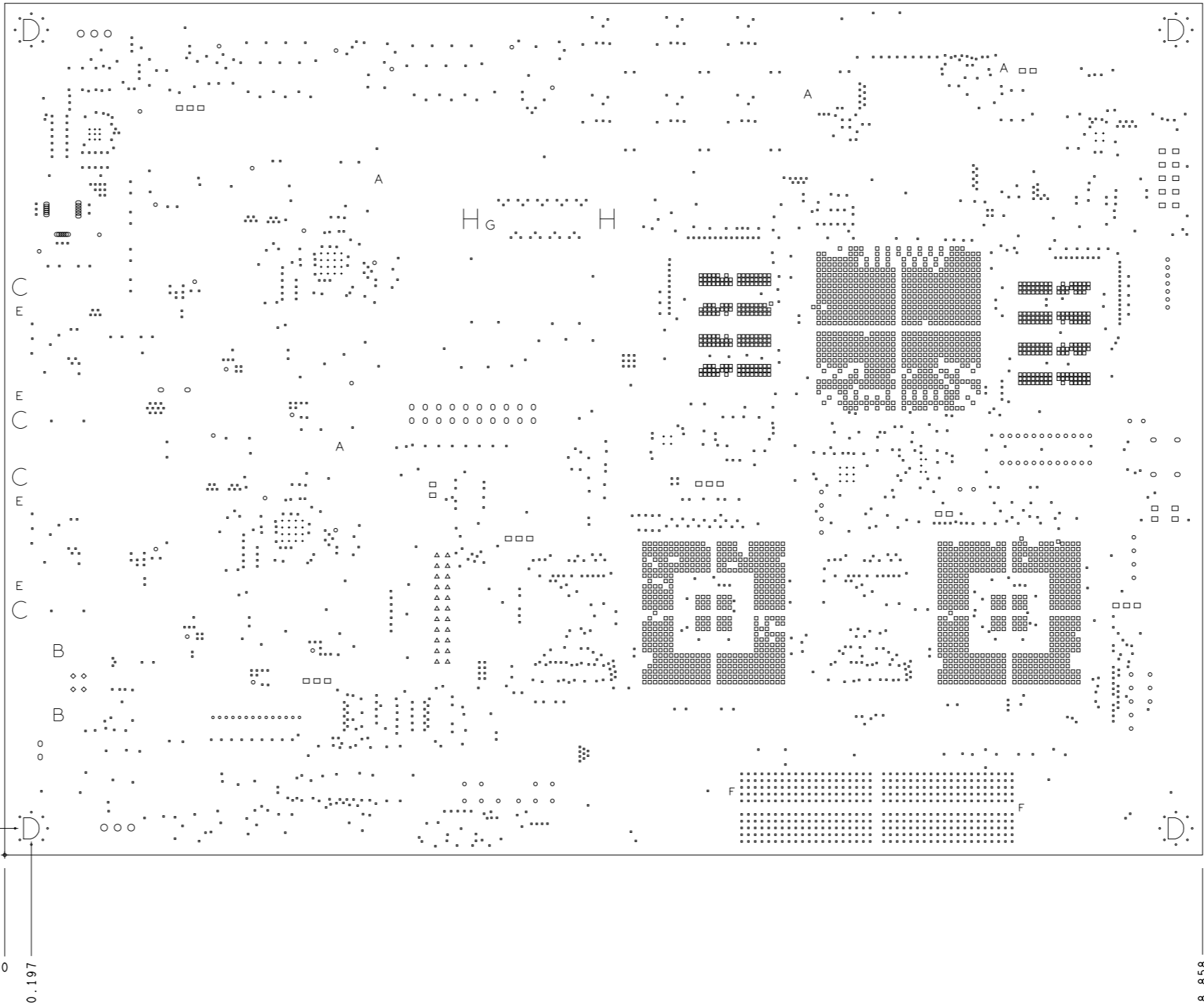
TEXAS INSTRUMENTS		
BOARD NAME:	DLP072-DLPC4420AEVMX	DESCRIPTION: LAYER 8 - PWR PLANE
PROJECT #:	DLP-30341-04	DATE: 22 AUG 2023 REVISION:

DRILL CHART: TOP to BOTTOM				
ALL UNITS ARE IN MILS				
FIGURE	SIZE	TOLERANCE	PLATED	QTY
□	8.0	+3.0/-8.0	PLATED	2105
•	12.0	+3.0/-12.0	PLATED	2100
•	12.01	+3.0/-12.01	PLATED	63
•	14.0	+3.0/-3.0	PLATED	32
•	20.0	+3.0/-3.0	PLATED	14
◦	28.0	+3.0/-3.0	PLATED	84
◦	36.0	+3.0/-3.0	PLATED	4
△	38.0	+3.0/-1.0	PLATED	22
◦	40.0	+2.0/-2.0	PLATED	24
◦	42.0	+3.0/-3.0	PLATED	22
▣	45.0	+3.0/-3.0	PLATED	35
○	50.0	+3.0/-3.0	PLATED	6
A	63.0	+3.0/-3.0	PLATED	4
B	90.0	+3.0/-3.0	PLATED	2
C	126.0	+3.0/-3.0	PLATED	4
D	157.0	+3.0/-3.0	PLATED	4
F	52.0	+3.0/-3.0	NON-PLATED	2
E	59.0	+3.0/-3.0	NON-PLATED	4
G	67.008	+3.0/-3.0	NON-PLATED	1
H	147.008	+3.0/-3.0	NON-PLATED	2

7

6.299

0.197  
0

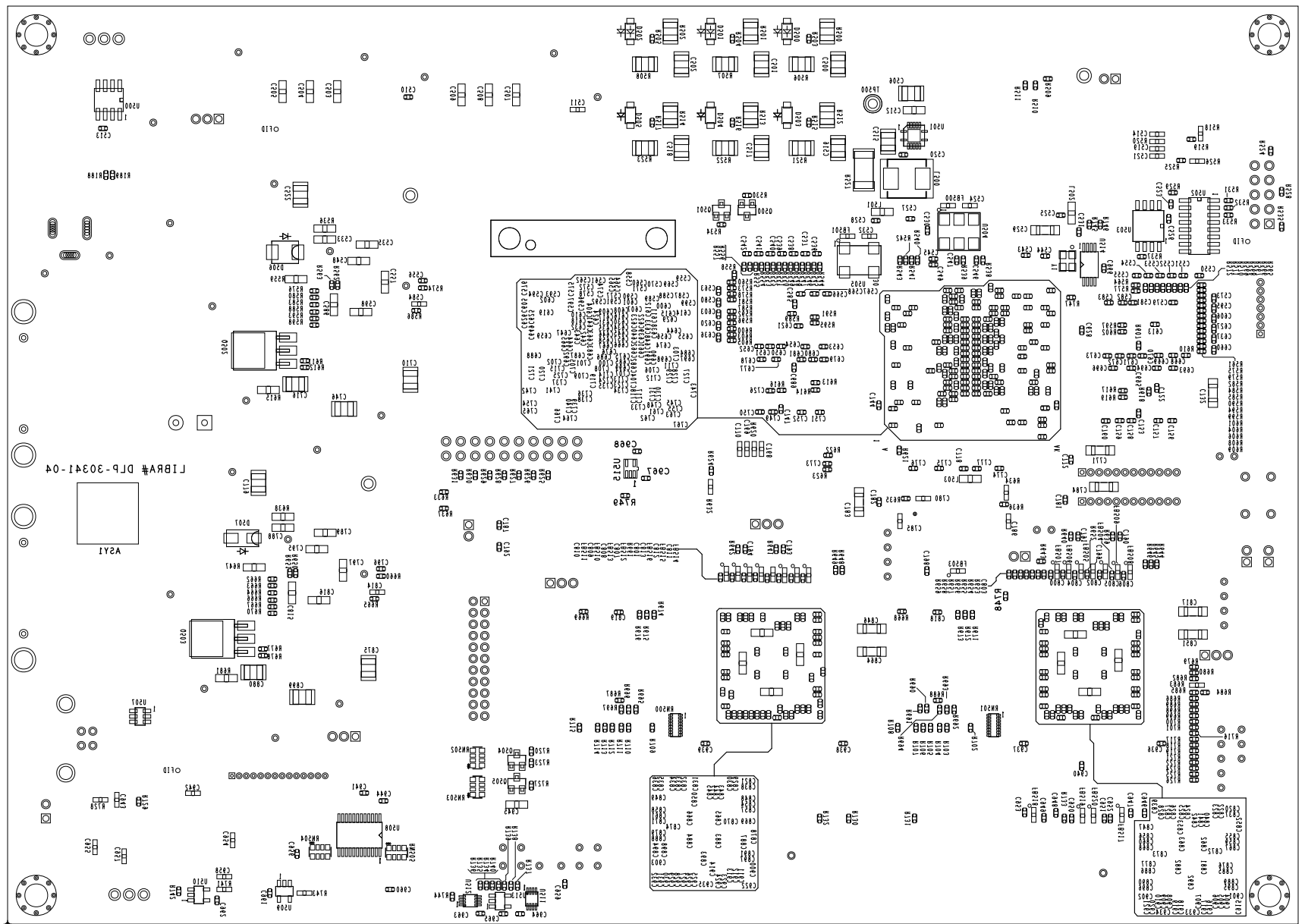


Primary Side Shown

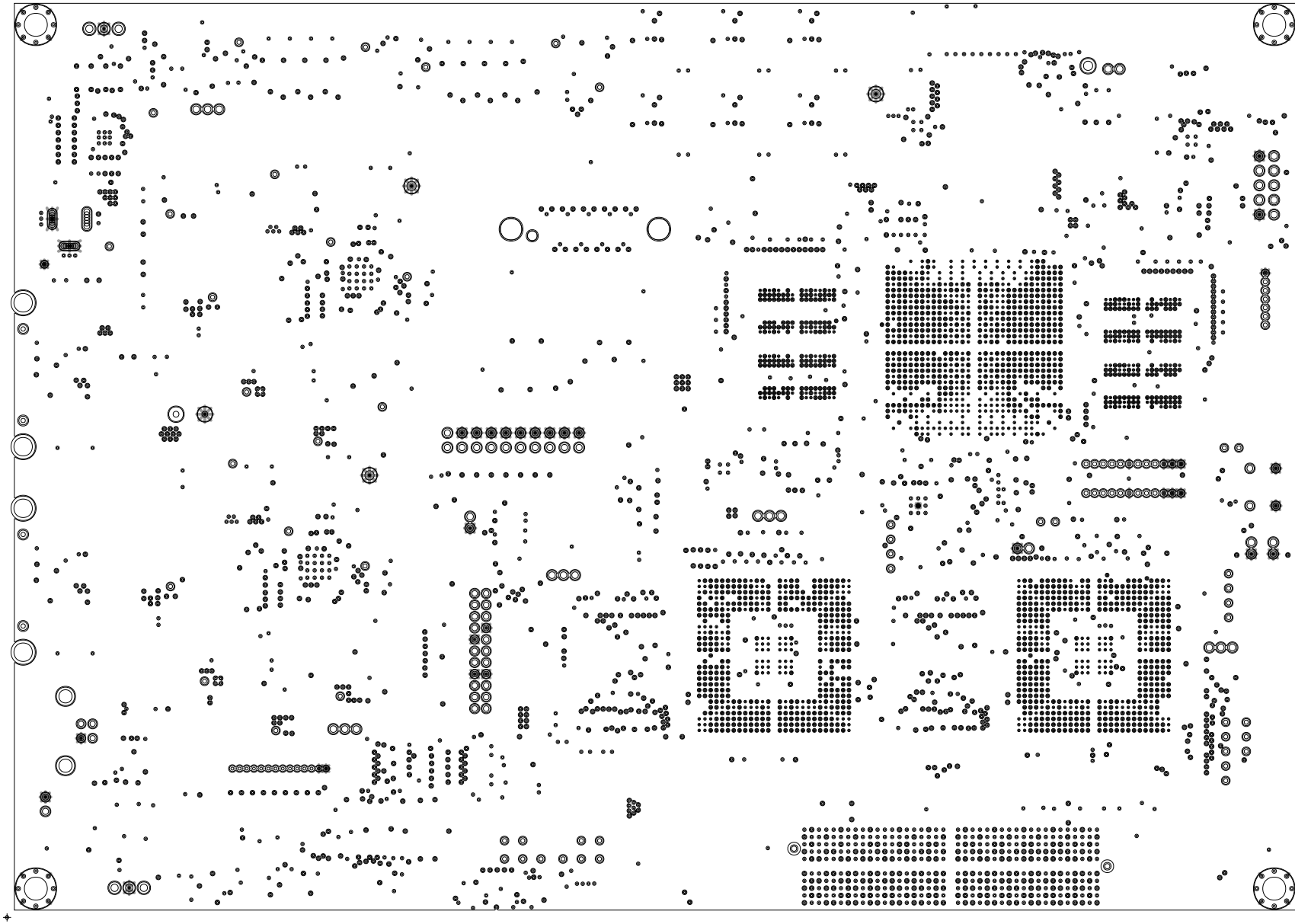
TEXAS INSTRUMENTS		
BOARD NAME:	DLP072-DLPC4420AEVMX	DESCRIPTION: FAB DRAWING
PROJECT #:	DLP-30341-04	DATE: 22 AUG 2023 REVISION:

- FAB NOTES:**
- ALL DIMENSIONS ARE IN INCHES. UNLESS OTHERWISE SPECIFIED, ALL BOARD OUTLINE DIMENSION TOLERANCES ARE +/- .010".
  - THE PWB SHALL BE FABRICATED TO IPC-6011 AND IPC-6012, CLASS 2, TYPE 3. WORKMANSHIP SHALL CONFORM TO IPC-A-600, CLASS 2, CURRENT REVISIONS.
  - BOARD MATERIAL SHALL BE 180 Tg/340 Td ISOLA FR-370HR OR EQUIVALENT, RoHS COMPLIANT AND LEAD FREE ASSEMBLY CAPABLE. BOARD MATERIAL SHALL MEET OR EXCEED IPC-4101B. RoHS CERTIFICATE OF CONFORMANCE SHALL BE DELIVERED WITH EACH LOT.
  - ALL BOARDS MUST MEET OR EXCEED UL94V-0 REQUIREMENTS. PCB MUST BEAR THE UL94V-0 UL REGISTERED MATERIAL ID NUMBER.
  - MINIMUM COPPER WALL THICKNESS OF PLATED-THRU HOLES TO BE .001 INCH, WITH A MINIMUM ANNULAR RING OF .001 INCH.
  - OVERALL BOARD THICKNESS TO BE .070 +/- .005 AND APPLIES AFTER ALL LAMINATION AND PLATING PROCESSES, MEASURED FROM COPPER TO COPPER.
  - INNER PLANE LAYERS TO BE 1 OZ. COPPER. INNER SIGNAL LAYERS TO BE 1/2 OZ. COPPER. OUTER LAYERS TO BE 1/2 OZ. COPPER + PLATING.
  - MAX. WARP & TWIST TO BE .0075 INCHES PER INCH.
  - ALL HOLES ARE ON A 0.0001 GRID EXCEPT THOSE INDICATED.
  - MAXIMUM RATED VOLTAGE BETWEEN CONDUCTORS SHALL BE 65 VOLTS PEAK.
  - NO BREAKOUT ALLOWED ON PLATED THROUGH HOLES.
  - FOIL OUTER OPTIONAL.
  - INTERPRET DIMENSIONS IN ACCORDANCE WITH ASME Y14.5M-1994
  - TEARDROP VIAS AS NECESSARY.
  - THIEVING IS NOT ALLOWED.
- PROCESS NOTES:**
- EXCEPT AS NOTED BELOW, ALL EXPOSED CONDUCTORS ON BOTH SIDES PWB SHALL BE ELECTROPLATED GOLD (5-15 MICROINCHES) OVER ELECTROPLATED NICKEL (150 MIN MICROINCHES).
  - APPLY LPI OR LDI SOLDERMASK. COLOR: BLUE. SOLDERMASK SHALL CONFORM TO IPC-SM-840, CLASS H, CURRENT REV.
  - FABRICATION VENDOR IS ALLOWED TO INCREASE SOLDERMASK COMPONENT PADS BY A MAXIMUM 1 MIL ON EACH SIDE OVER THE COPPER PAD IN ORDER TO MEET TOOLING REQUIREMENTS WHILE MAINTAINING WEBBING BETWEEN ADJACENT PADS.
  - APPLY LPI SILKSCREEN OR EQUIVALENT PER THE ARTWORK BOTH SIDES. COLOR: WHITE.
  - BOARD MUST BE ELECTRICALLY TESTED USING SUPPLIED IPC-D-356 NETLIST.
  - ALL BOARDS MUST MEET OR EXCEED UL94-V0 REQUIREMENTS. PCB MUST BEAR THE UL94-V0 REGISTERED MATERIAL ID NUMBER.
  - FILL 12.01 VIAS W/ NON-CONDUCTIVE EPOXY AND POLISH FLAT SUITABLE FOR SOLDERING.

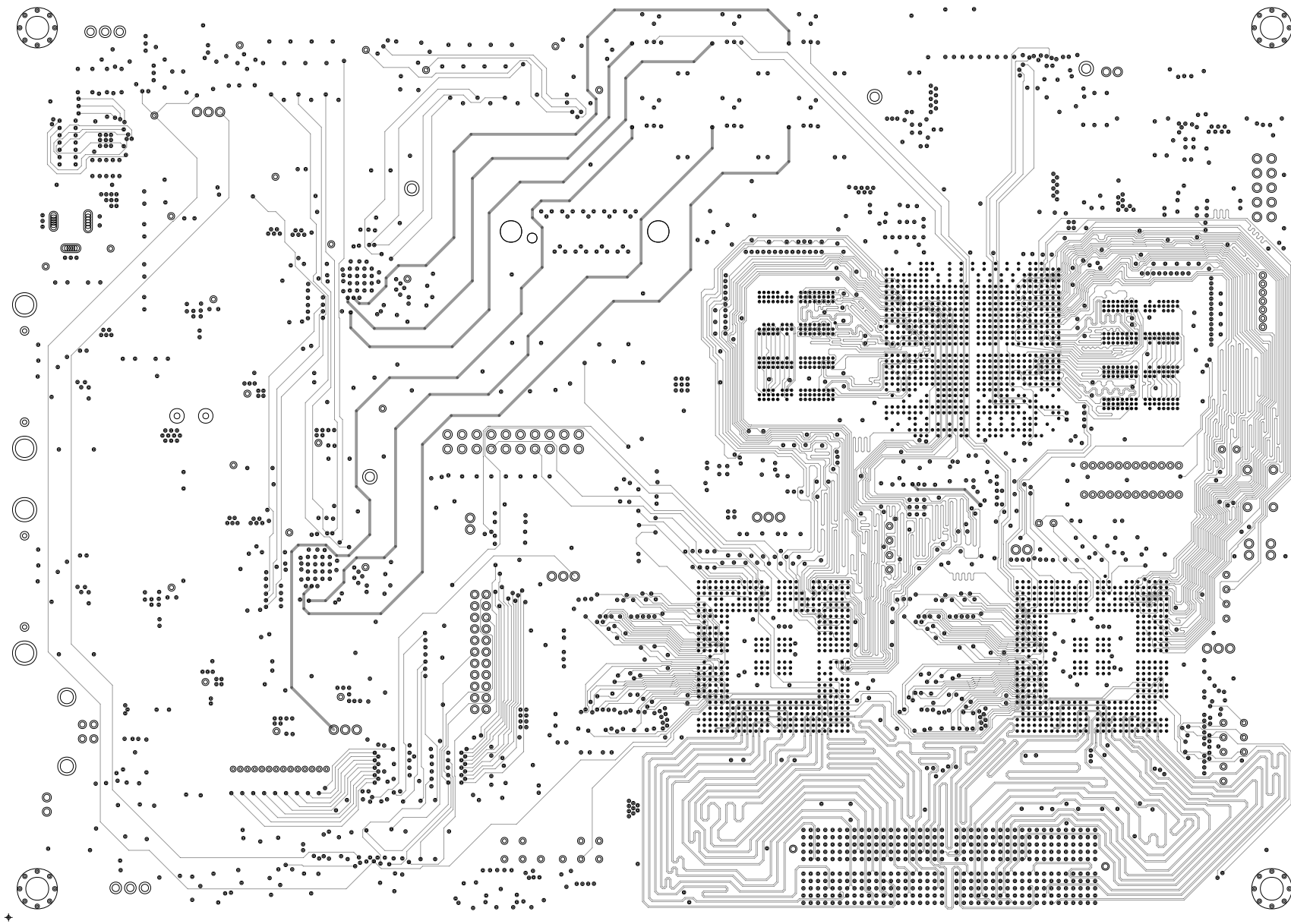
LAYER STACKUP	
LAYER 1 - PRIMARY SIDE	
LAYER 2 - GND PLANE	
LAYER 3 - SIGNAL	
LAYER 4 - GND PLANE	
LAYER 5 - SIGNAL	EXTERNAL LAYERS
LAYER 6 - GND PLANE	0.0038" WIDE/0.0062" SPACING 100 OHMS DIFFERENTIAL +/-10%
LAYER 7 - PWR PLANE	0.0045" WIDE/0.0055" SPACING 90 OHMS DIFFERENTIAL +/-10%
LAYER 8 - PWR PLANE	
LAYER 9 - GND PLANE	INTERNAL LAYERS
LAYER 10 - SIGNAL	0.004" WIDE 50 OHMS SINGLE ENDED +/-10%
LAYER 11 - GND PLANE	0.0035" WIDE/0.0065" SPACING 100 OHMS DIFFERENTIAL +/-10%
LAYER 12 - SIGNAL	0.00425" WIDE/0.00575" SPACING 90 OHMS DIFFERENTIAL +/-10%
LAYER 13 - GND PLANE	
LAYER 14 - SIGNAL	



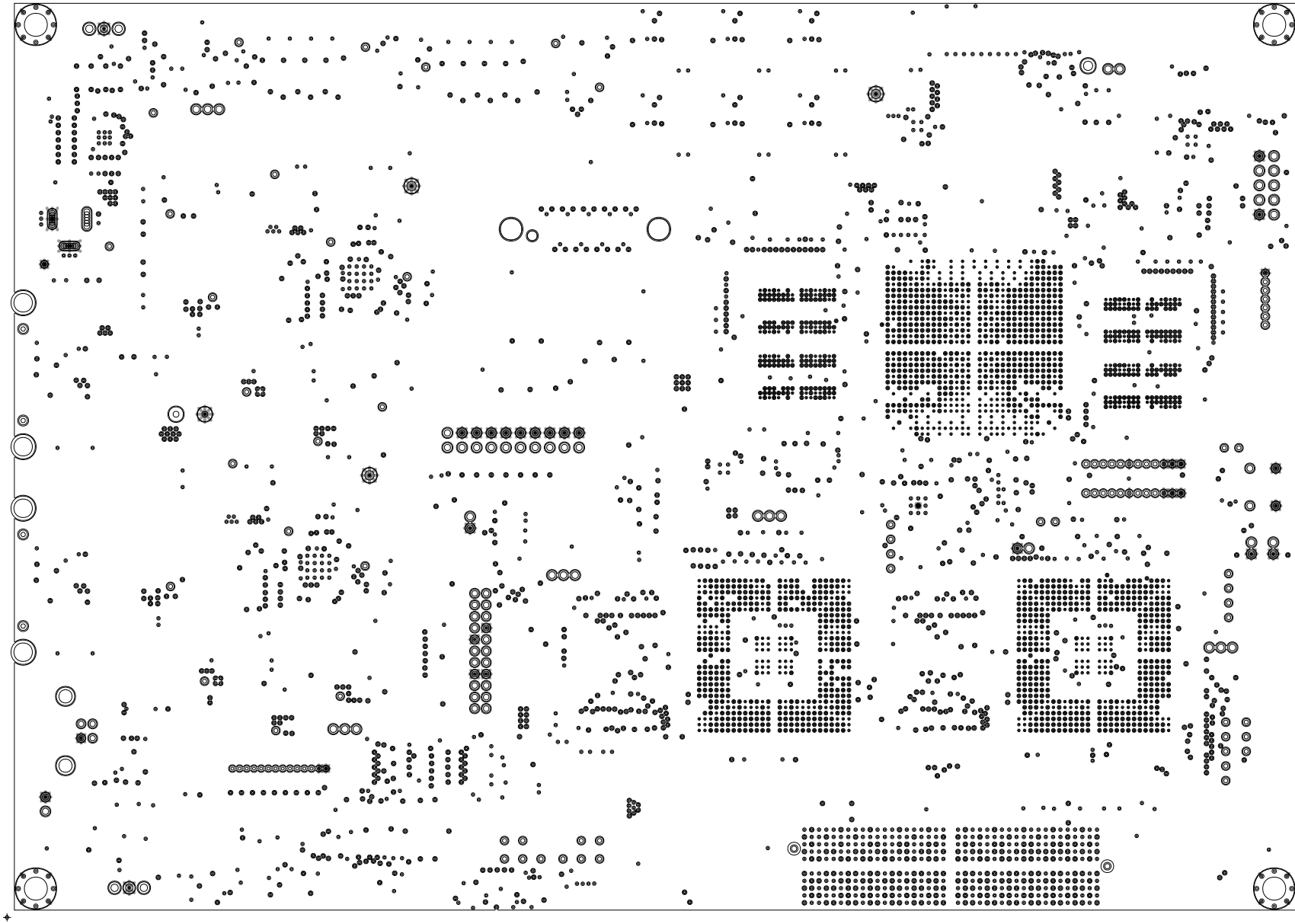
TEXAS INSTRUMENTS		ASSEMBLY - SECONDARY SIDE	
BOARD NAME: DLP072-DLPC4420AEVMX		DESCRIPTION: SILKSCREEN - SECONDARY SIDE	
PROJECT #: DLP-30341-04		DATE: 22 AUG 2023	REVISION: 2 2



TEXAS INSTRUMENTS		
BOARD NAME:	DLP072-DLPC4420AEVMX	DESCRIPTION: LAYER 4 - GND PLANE
PROJECT #:	DLP-30341-04	DATE: 22 AUG 2023
		REVISION:



TEXAS INSTRUMENTS		
BOARD NAME:	DLP072-DLPC4420AEVMX	DESCRIPTION: LAYER 3 - SIGNAL
PROJECT #:	DLP-30341-04	DATE: 22 AUG 2023 REVISION:

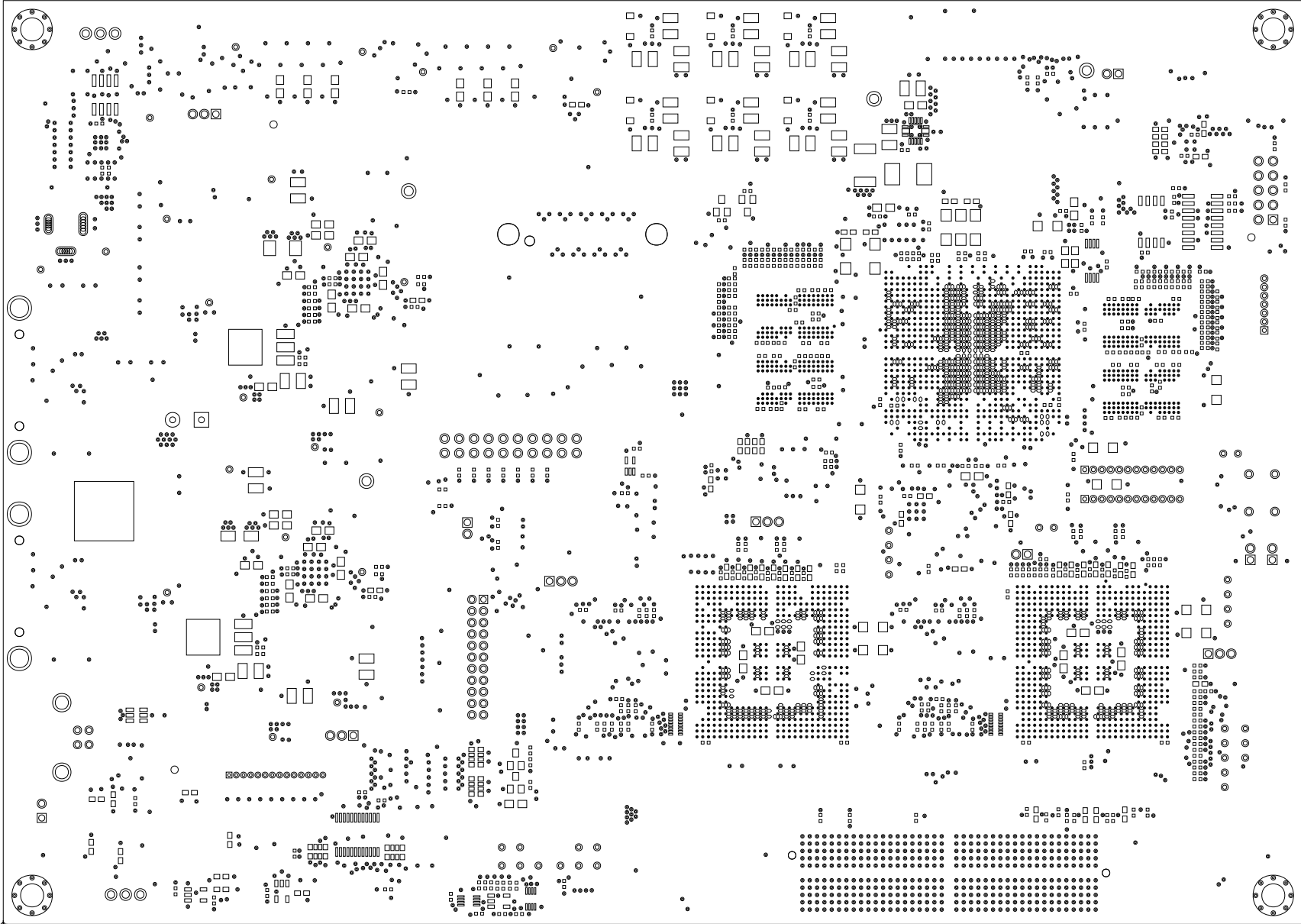


TEXAS INSTRUMENTS		
BOARD NAME:	DLP072-DLPC4420AEVMX	DESCRIPTION: LAYER 2 - GND PLANE
PROJECT #:	DLP-30341-04	DATE: 22 AUG 2023 REVISION:

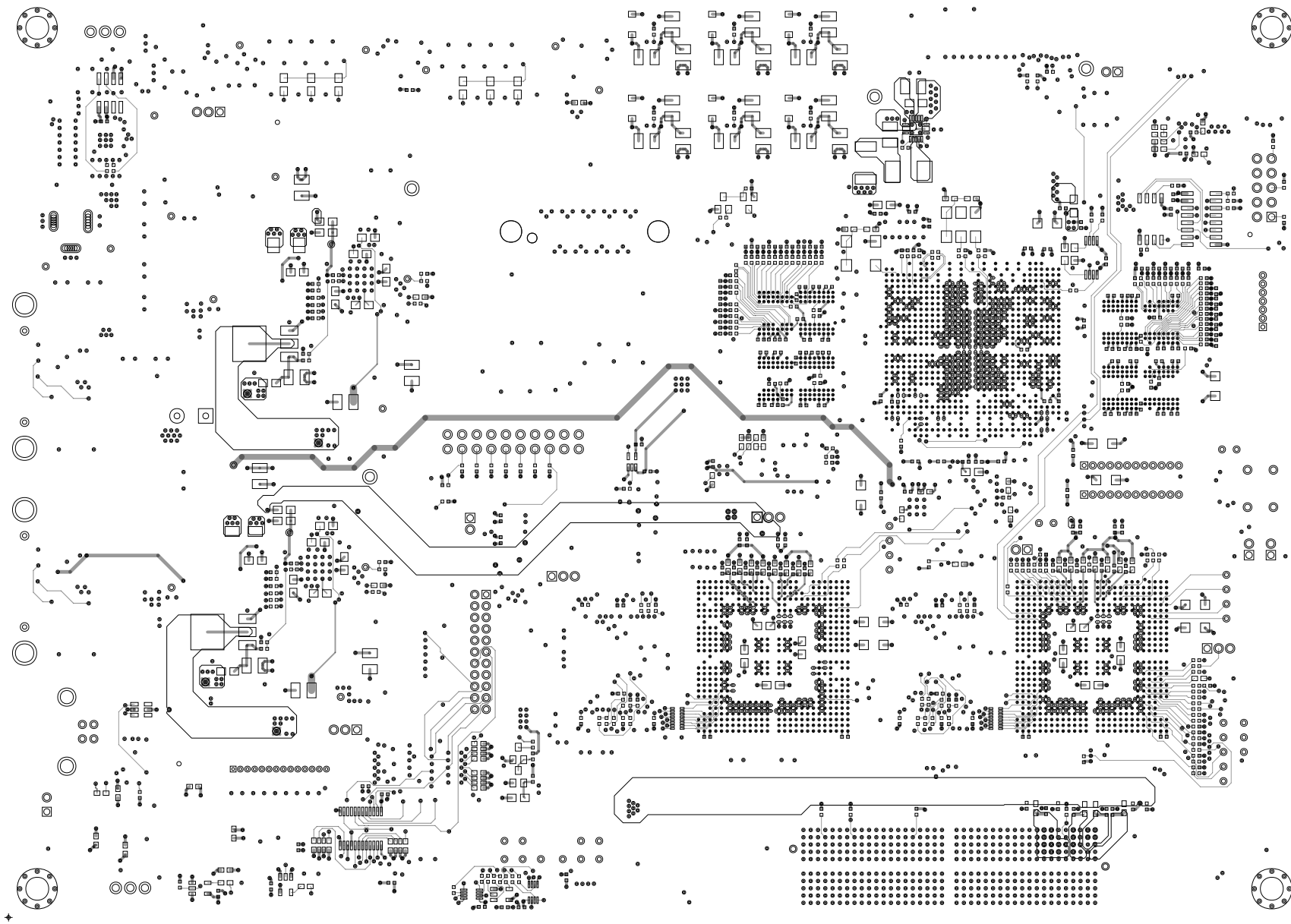


ART FILM - ssb

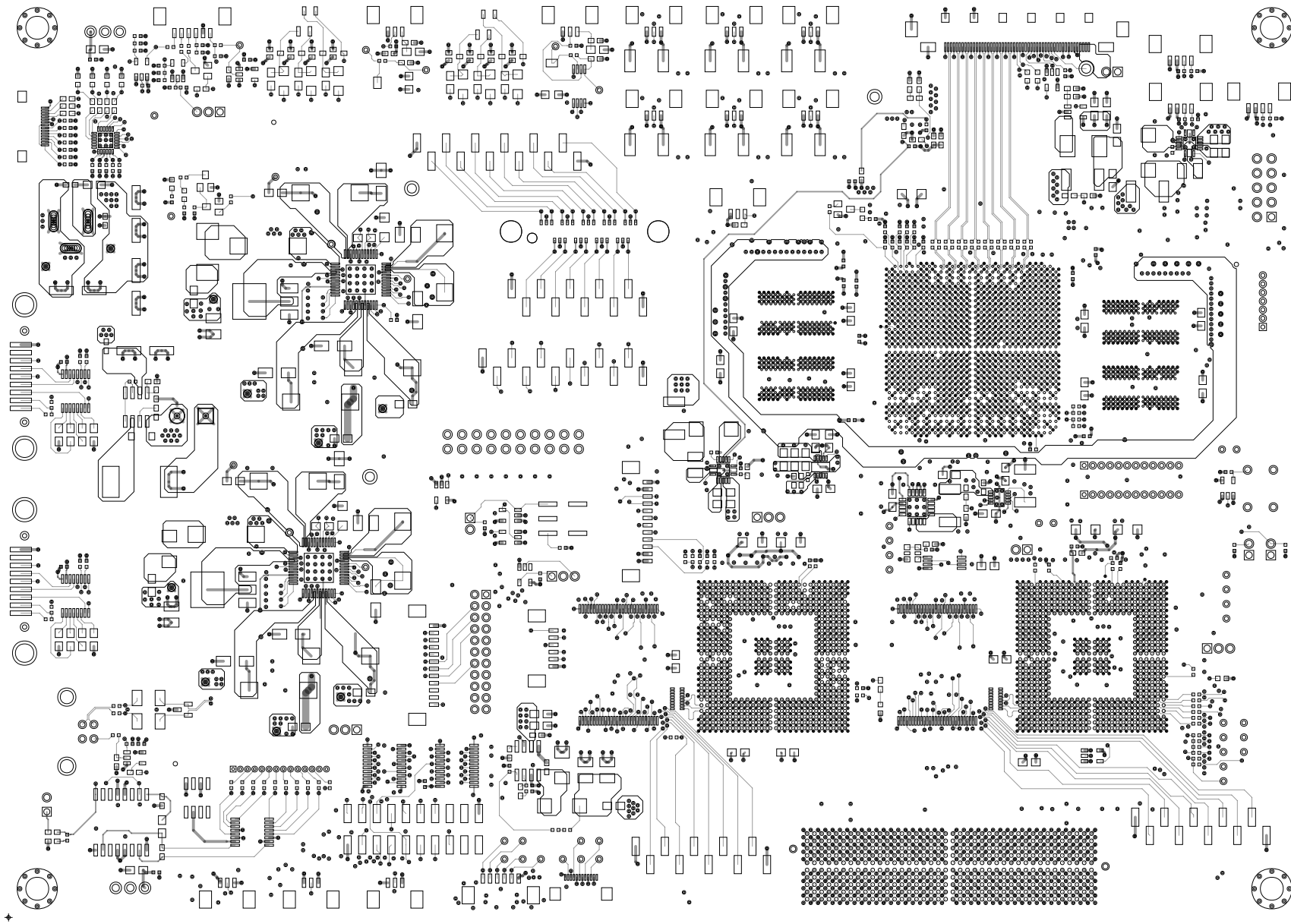




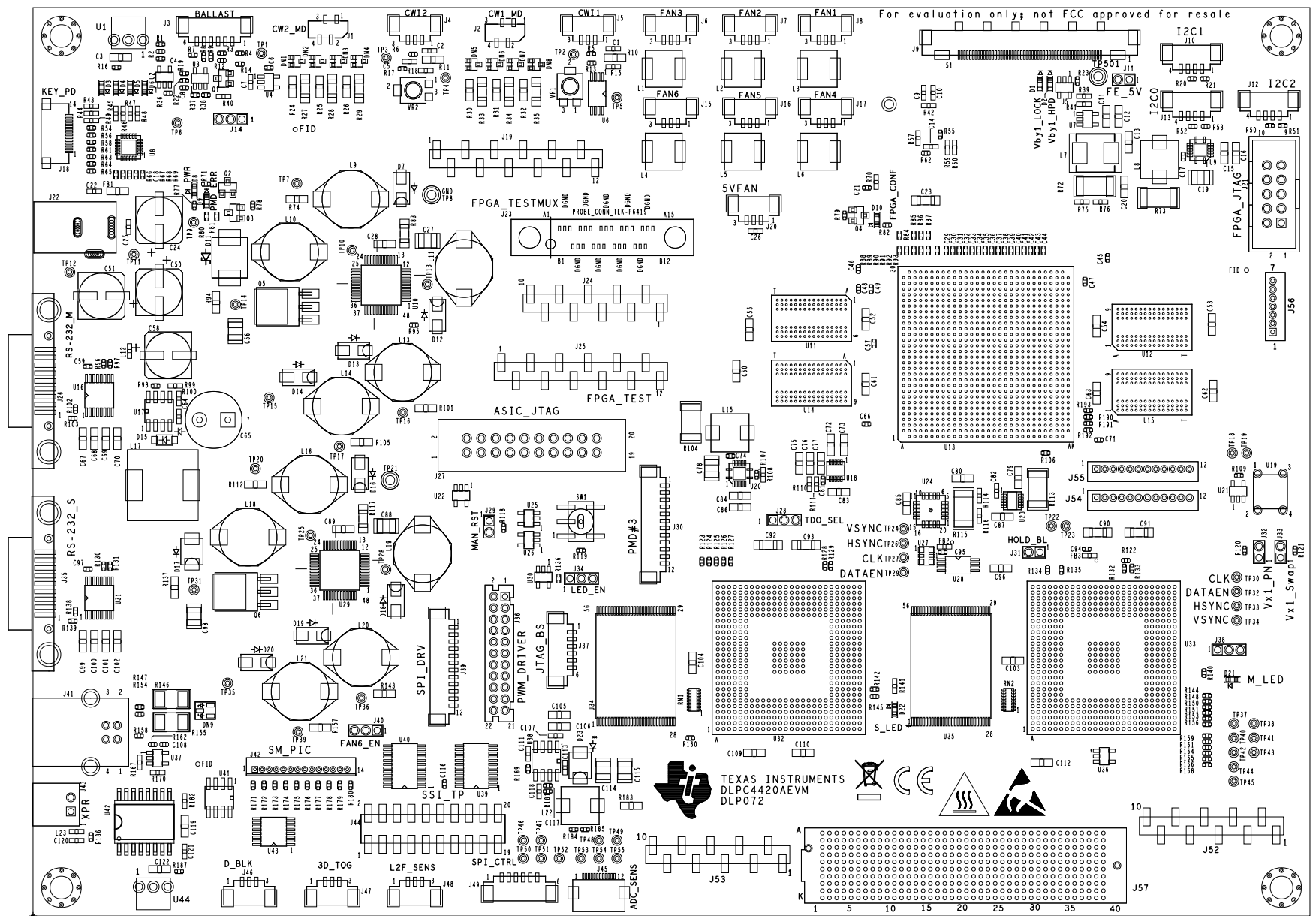
TEXAS INSTRUMENTS		
BOARD NAME:	DLP072-DLPC4420AEVMX	DESCRIPTION: SOLDERMASK - SECONDARY SIDE
PROJECT #:	DLP-30341-04	DATE: 22 AUG 2023
		REVISION:

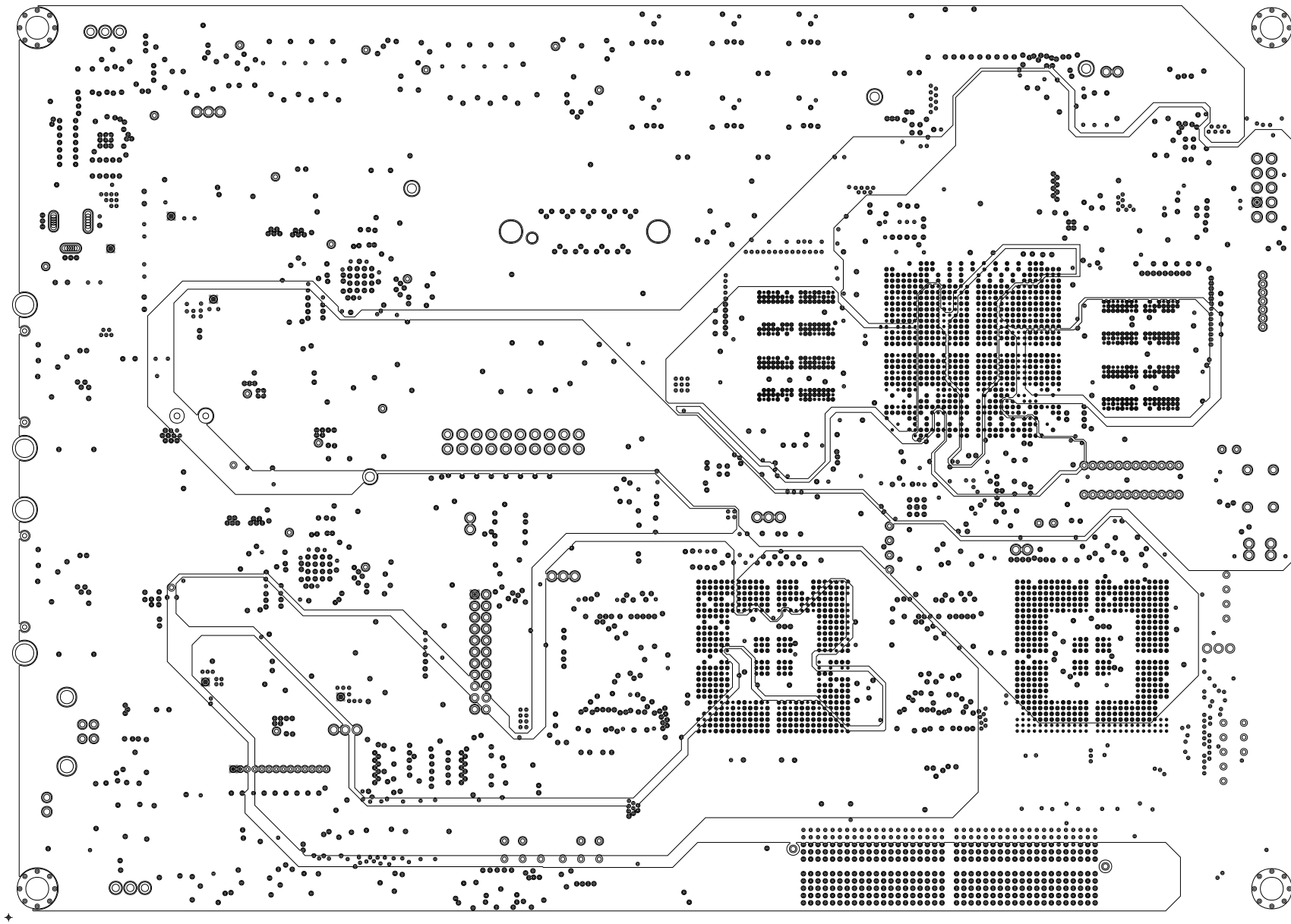


TEXAS INSTRUMENTS		
BOARD NAME:	DLP072-DLPC4420AEVMX	DESCRIPTION: LAYER 14 - SECONDARY SIDE
PROJECT #:	DLP-30341-04	DATE: 22 AUG 2023 REVISION:

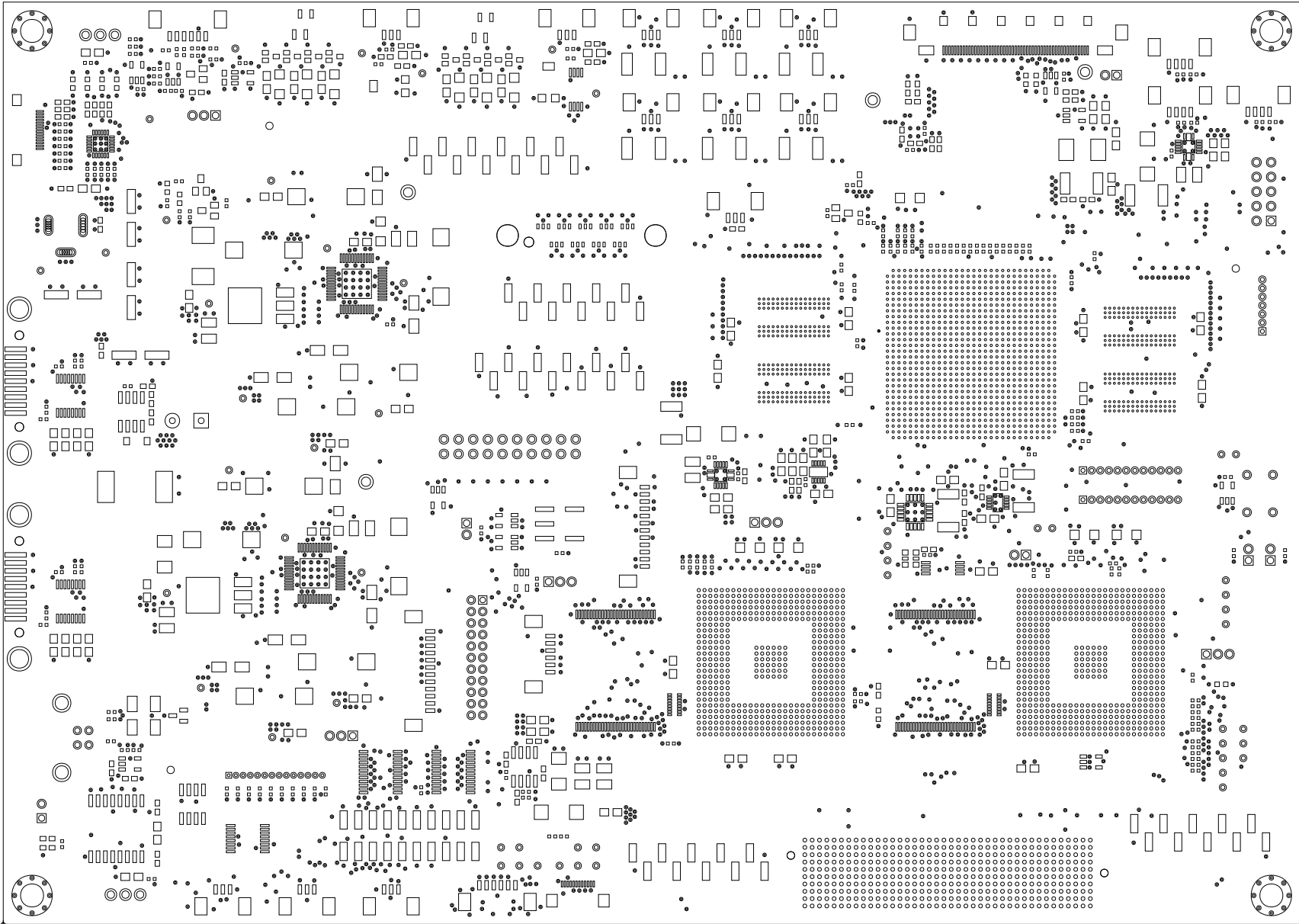


TEXAS INSTRUMENTS		
BOARD NAME:	DLP072-DLPC4420AEVMX	DESCRIPTION: LAYER 1 - PRIMARY SIDE
PROJECT #:	DLP-30341-04	DATE: 22 AUG 2023 REVISION:

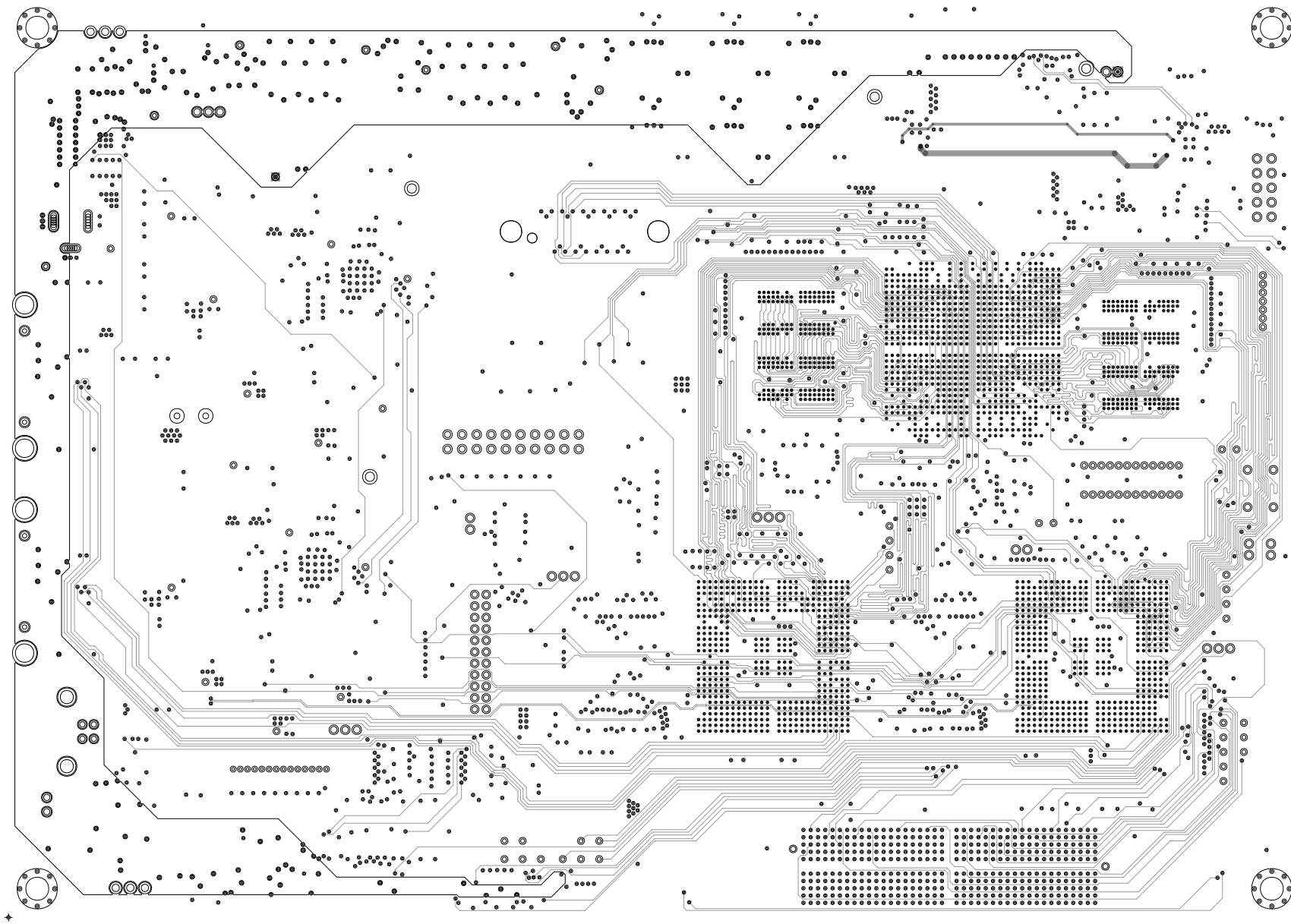




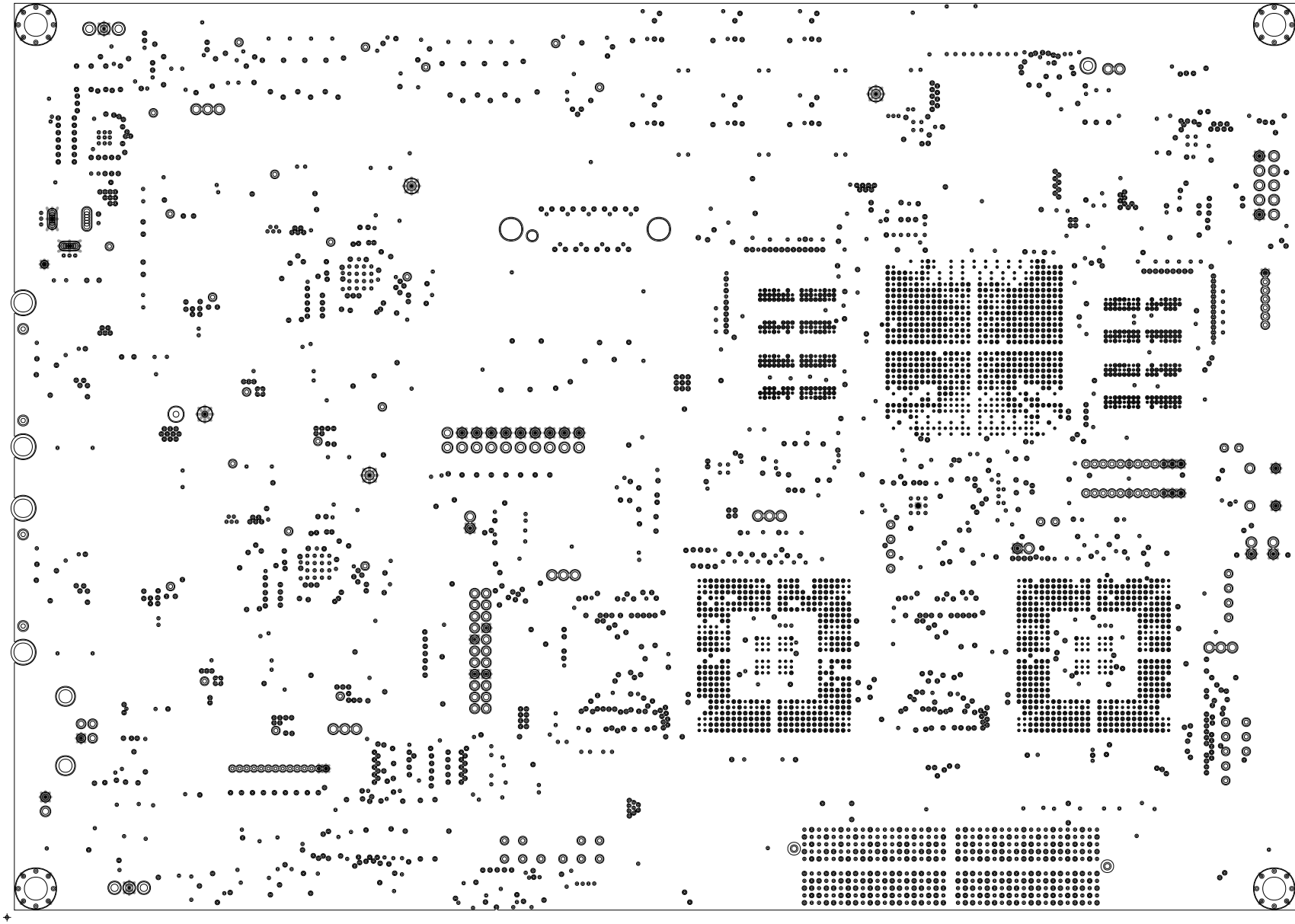
TEXAS INSTRUMENTS		
BOARD NAME:	DLP072-DLPC4420AEVMX	DESCRIPTION: LAYER 7 - PWR PLANE
PROJECT #:	DLP-30341-04	DATE: 22 AUG 2023 REVISION:



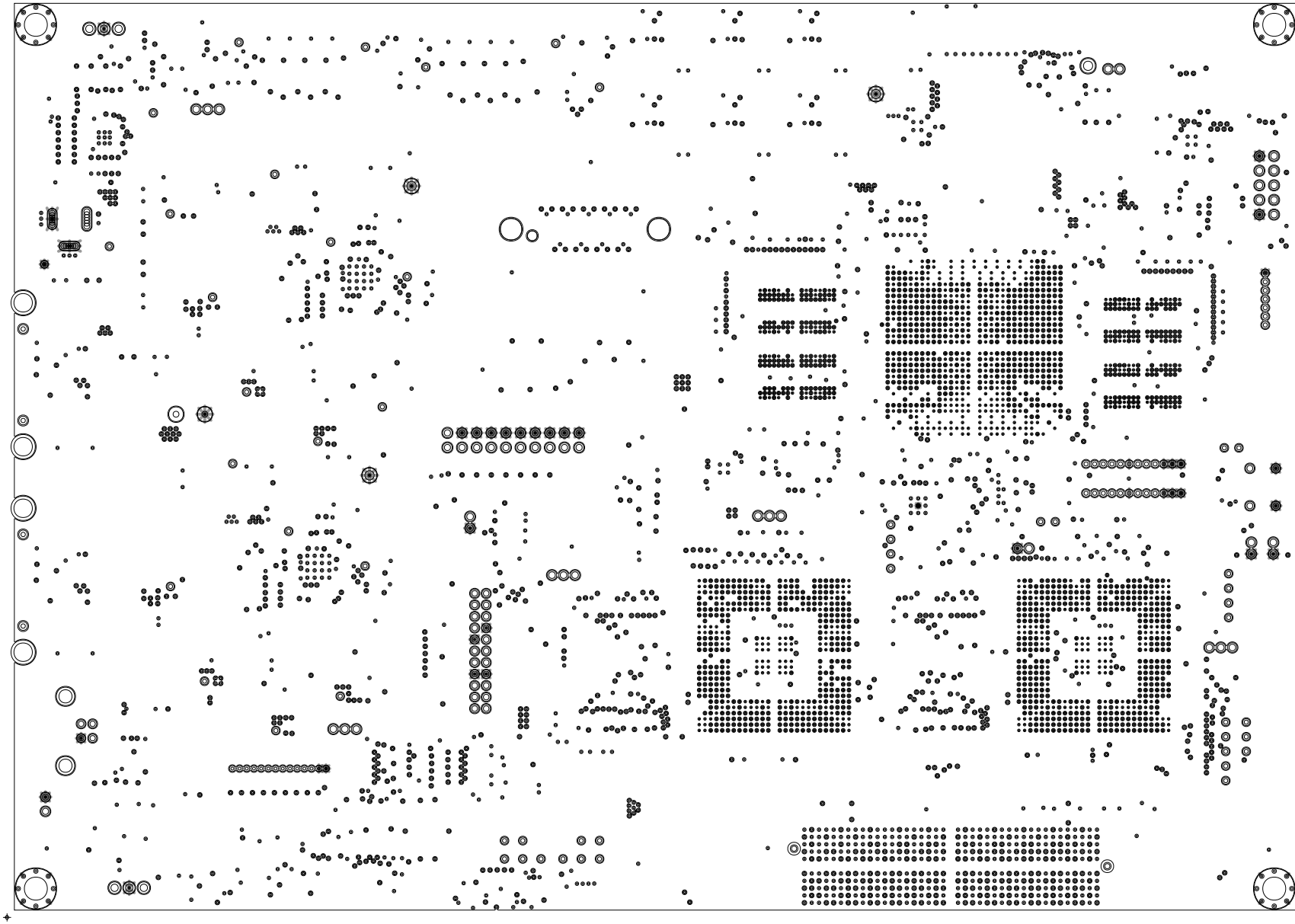
TEXAS INSTRUMENTS		
BOARD NAME:	DLP072-DLPC4420AEVMX	DESCRIPTION: SOLDERMASK - PRIMARY SIDE
PROJECT #:	DLP-30341-04	DATE: 22 AUG 2023
		REVISION:



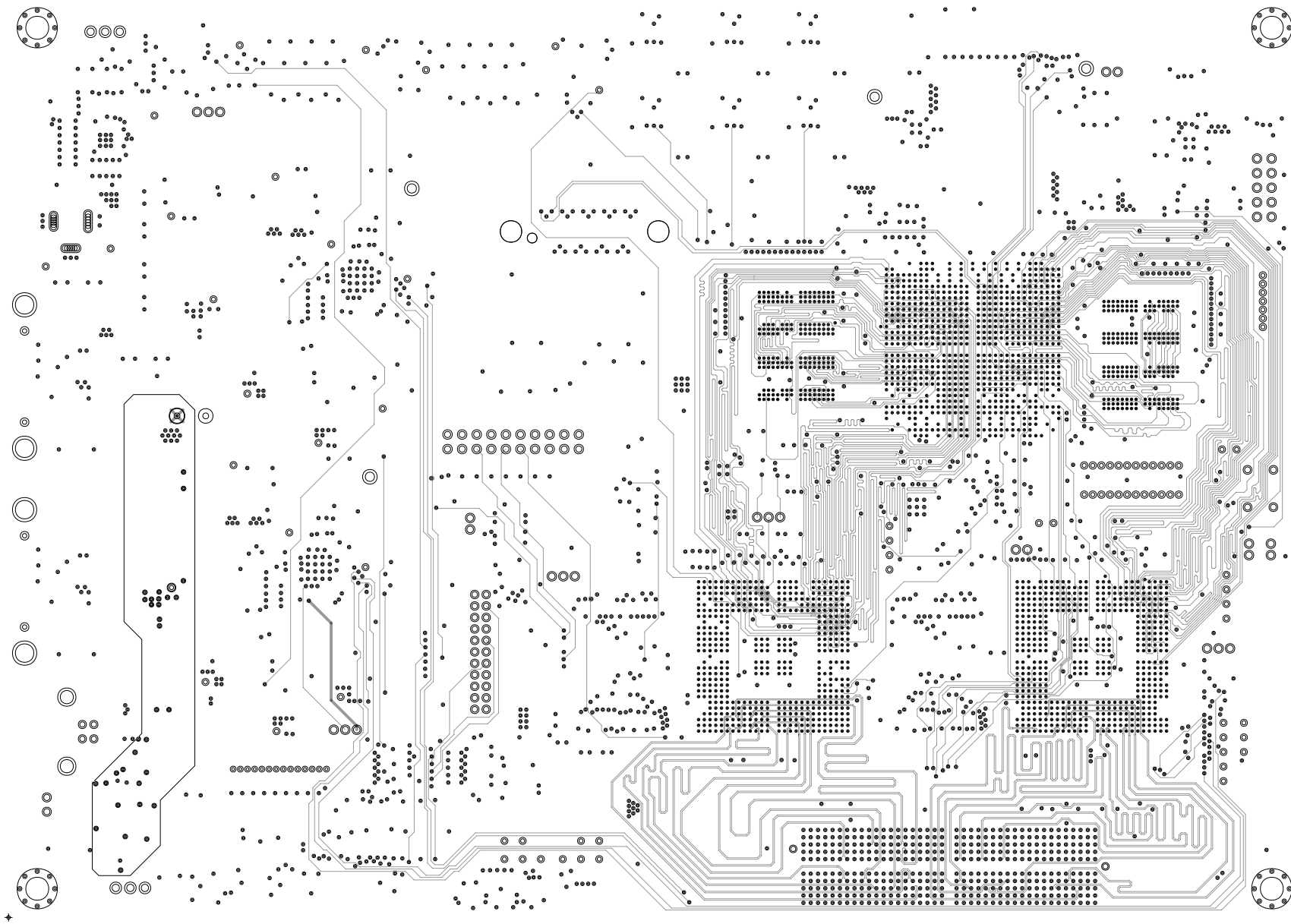
TEXAS INSTRUMENTS		
BOARD NAME:	DLP072-DLPC4420AEVMX	DESCRIPTION: LAYER 5 - SIGNAL
PROJECT #:	DLP-30341-04	DATE: 22 AUG 2023 REVISION:



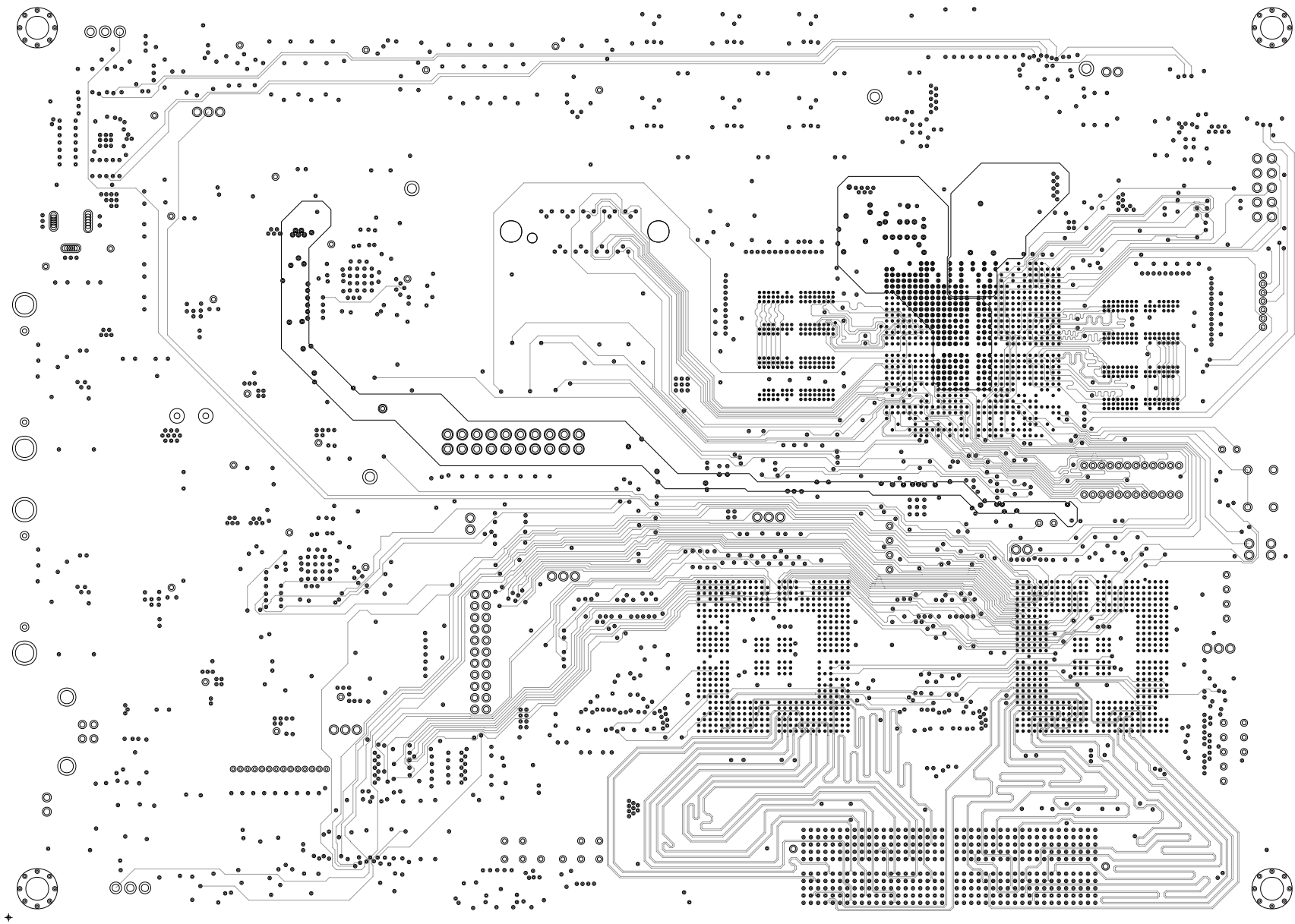
TEXAS INSTRUMENTS		
BOARD NAME:	DLP072-DLPC4420AEVMX	DESCRIPTION: LAYER 6 - GND PLANE
PROJECT #:	DLP-30341-04	DATE: 22 AUG 2023
		REVISION:



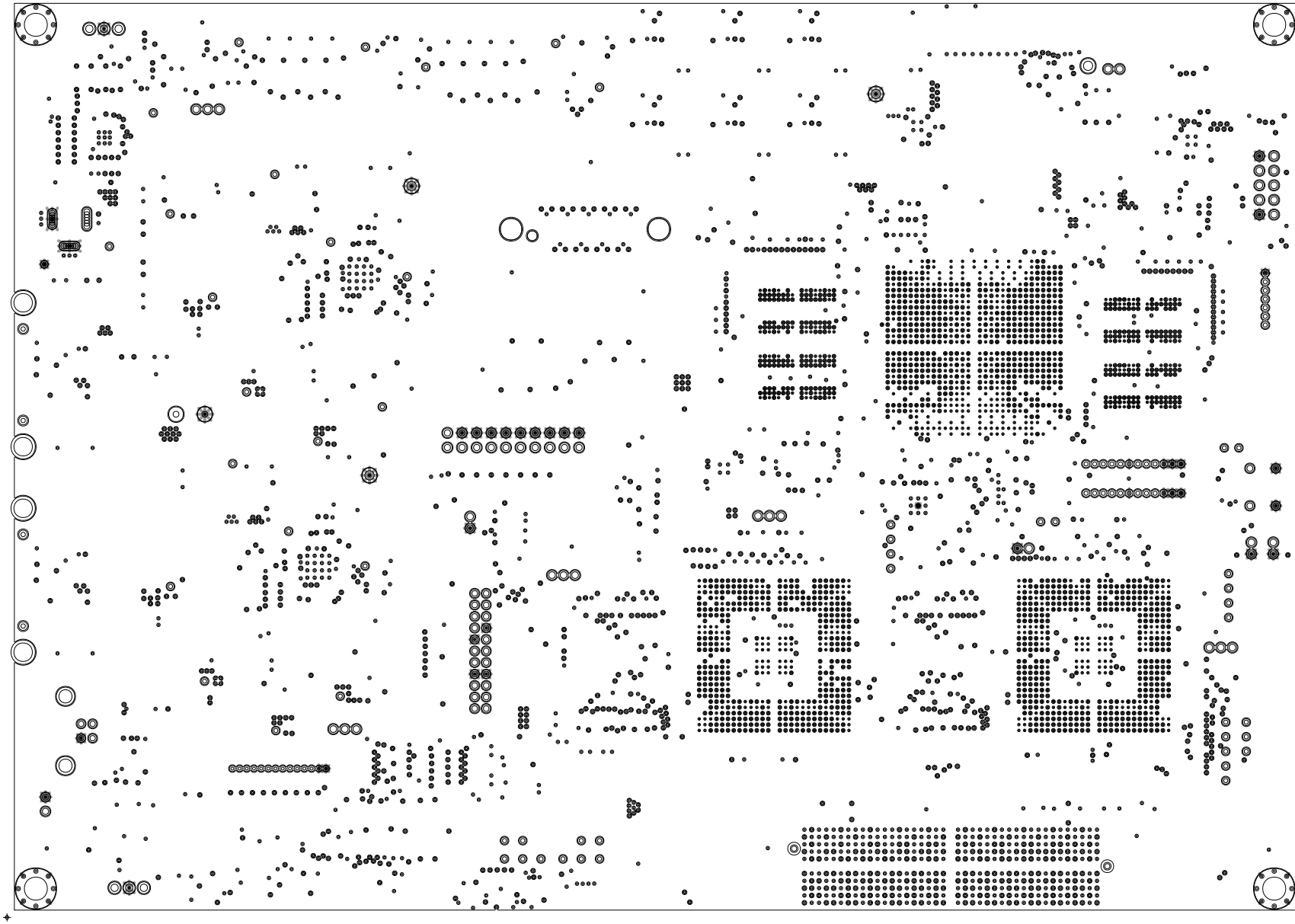
TEXAS INSTRUMENTS		
BOARD NAME:	DLP072-DLPC4420AEVMX	DESCRIPTION: LAYER 9 - GND PLANE
PROJECT #:	DLP-30341-04	DATE: 22 AUG 2023 REVISION:



TEXAS INSTRUMENTS		
BOARD NAME:	DLP072-DLPC4420AEVMX	DESCRIPTION: LAYER 10 - SIGNAL
PROJECT #:	DLP-30341-04	DATE: 22 AUG 2023 REVISION:



TEXAS INSTRUMENTS		
BOARD NAME:	DLP072-DLPC4420AEVMX	DESCRIPTION: LAYER 12 - SIGNAL
PROJECT #:	DLP-30341-04	DATE: 22 AUG 2023 REVISION:



TEXAS INSTRUMENTS		
BOARD NAME:	DLP072-DLPC4420AEVMX	DESCRIPTION: LAYER 13 - GND PLANE
PROJECT #:	DLP-30341-04	DATE: 22 AUG 2023
		REVISION:



+



TEXAS INSTRUMENTS		
BOARD NAME:	DLP072-DLPC4420AEVMX	DESCRIPTION: SOLDERPASTE - SECONDARY SIDE
PROJECT #:	DLP-30341-04	DATE: 22 AUG 2023 REVISION: